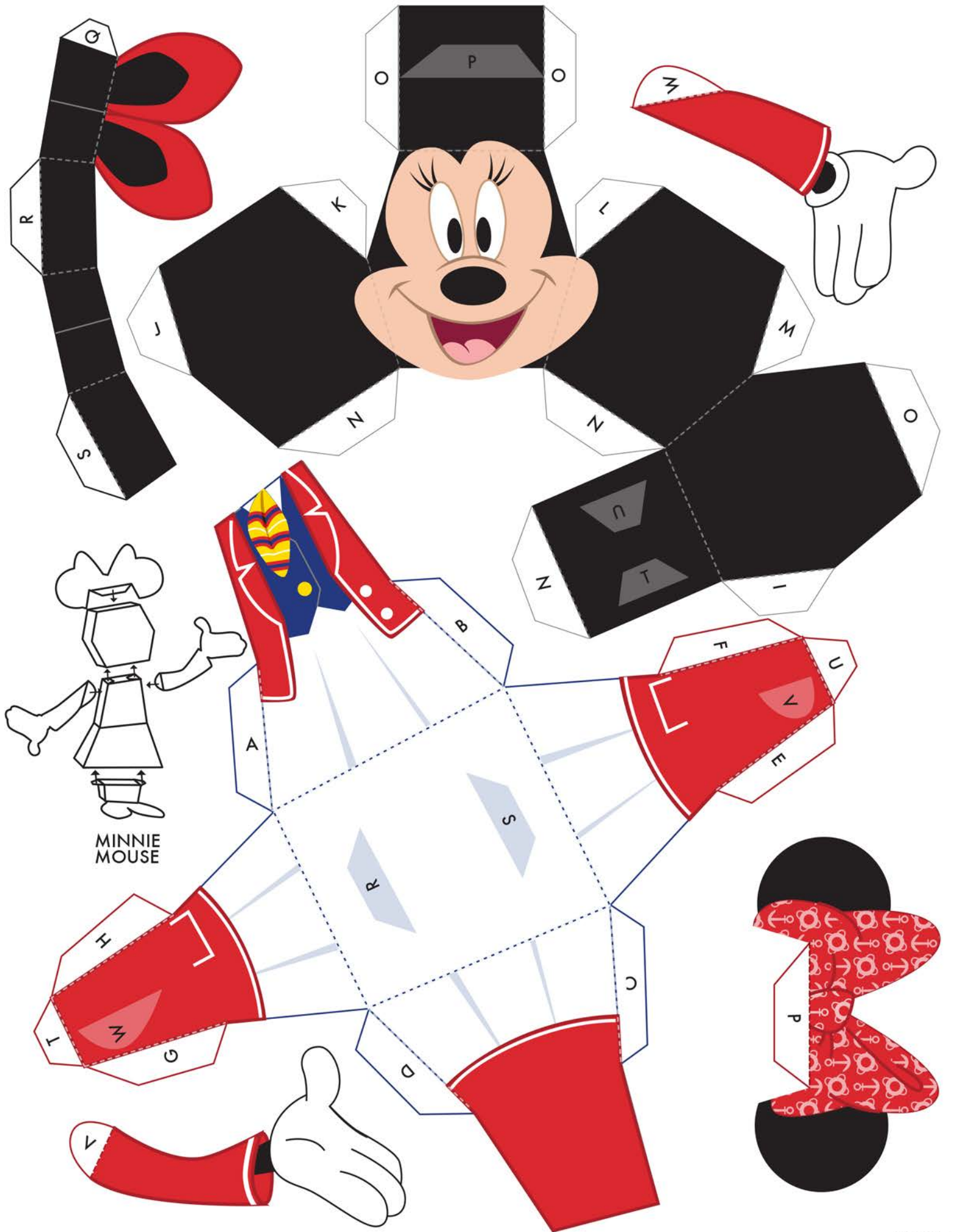


Disney CRUISE LINE
CASTAWAY CLUB

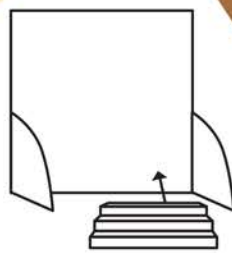
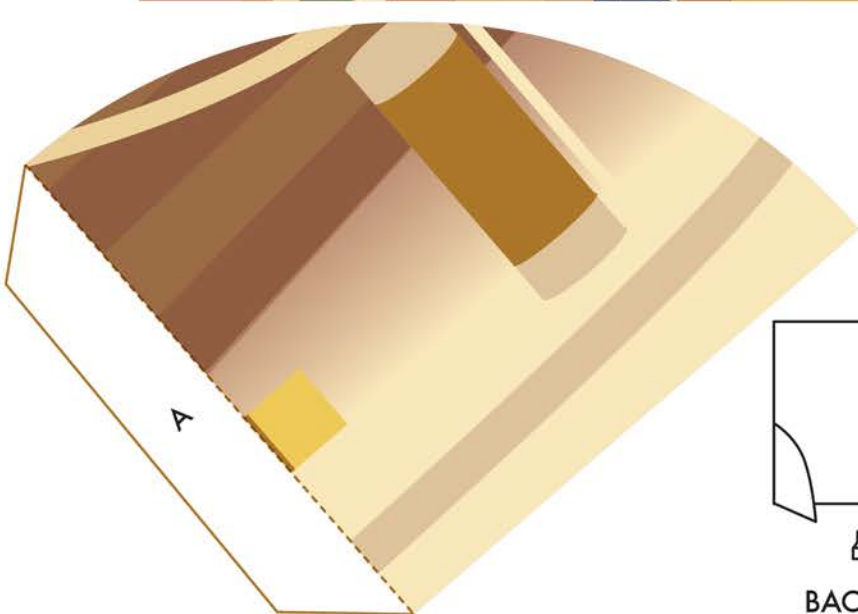
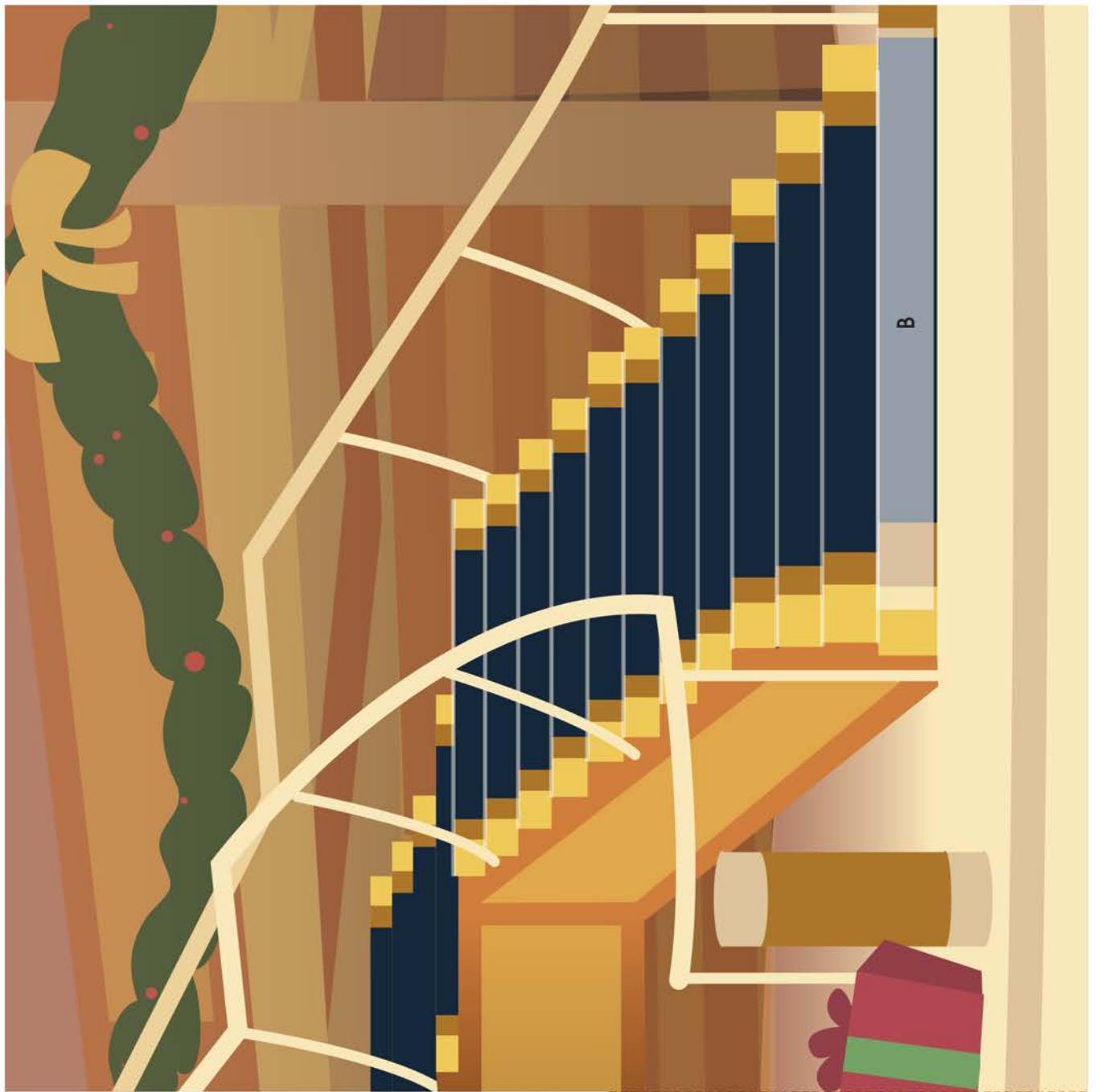
Holiday Paper Toys



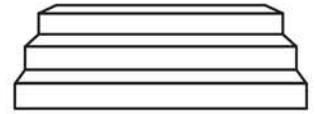
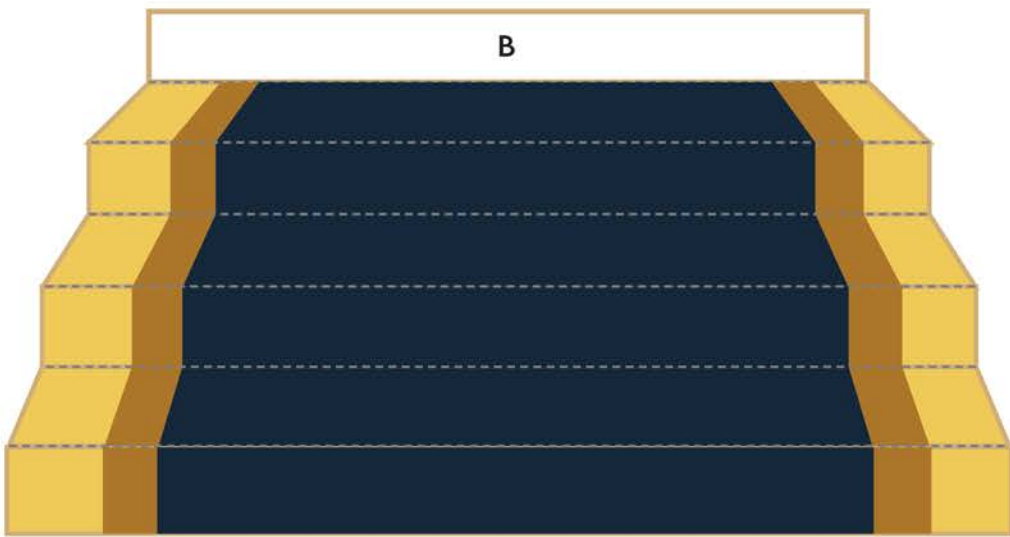
Take a picture with your finished masterpiece and share it with @DisneyCruise using #DCLholidaytoys



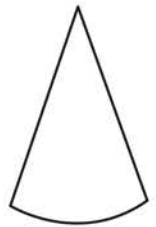
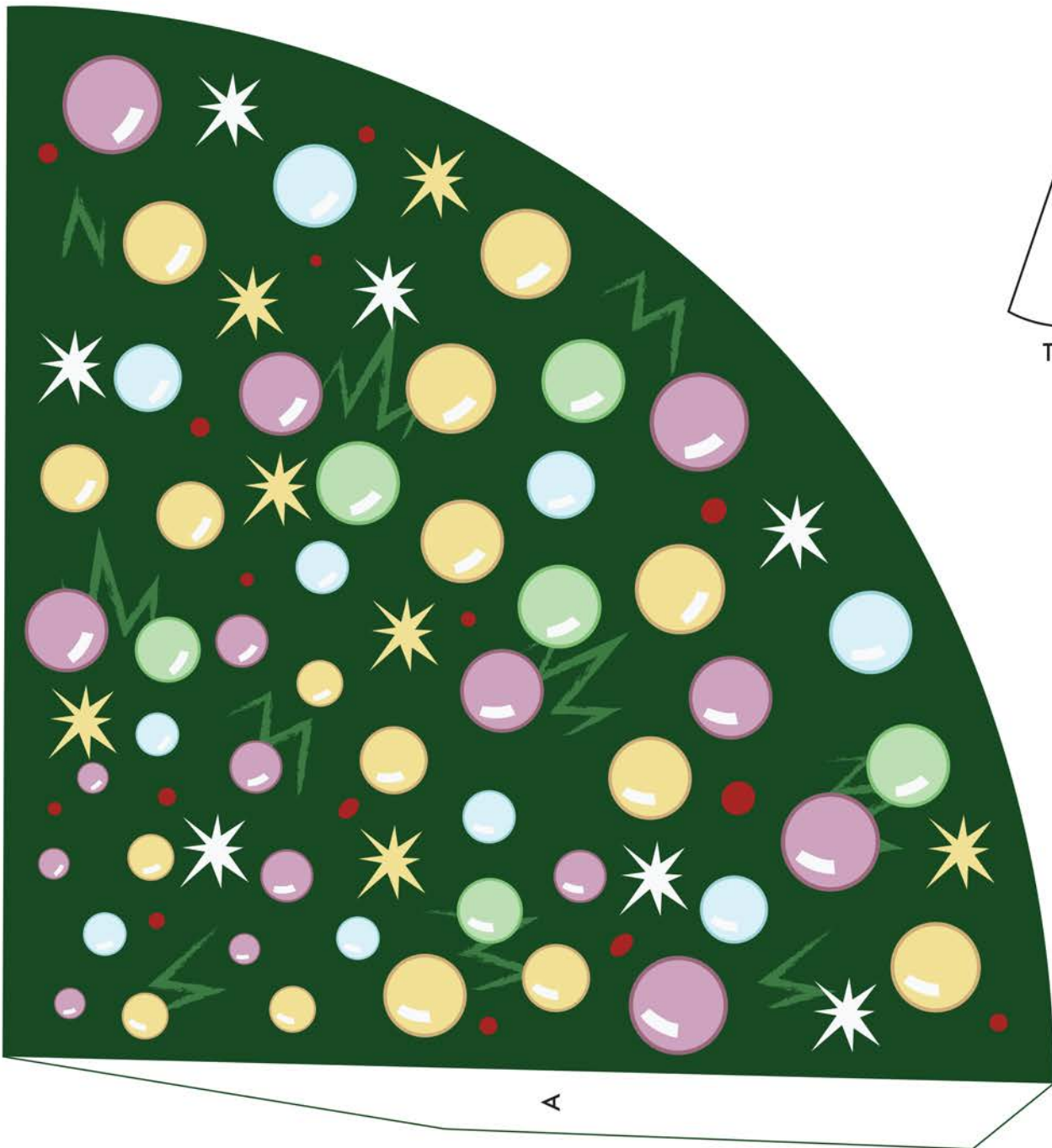
MINNIE
MOUSE



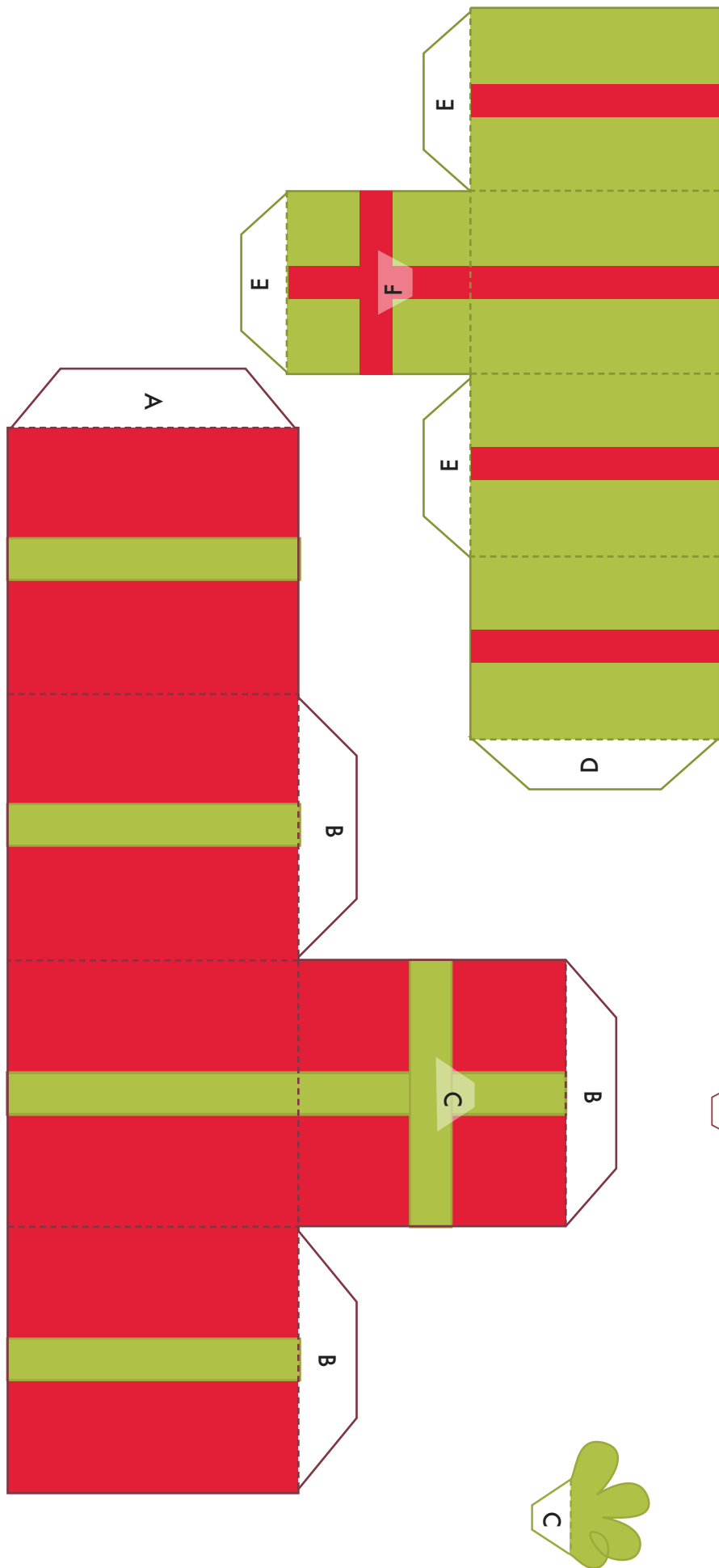
BACKDROP



STAIRS



TREE



ASSEMBLY INSTRUCTIONS

1. Print this template on matte photo paper or card stock.
2. Use a thin layer of white glue for gluing.
3. For nice clean folds, score dashed fold lines by very lightly running an x-acto knife along a straight edge.
4. Cut out all parts as needed on solid lines.

PRESENTS

1. Glue tabs in alphabetical order to form boxes.
2. Glue Bows on top of presents by matching up letters.

BACKDROP

1. Glue tab A to back of backdrop on left side.
2. Fold both flaps forward to make backdrop stand up.

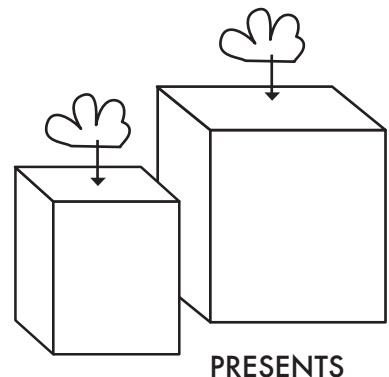
SAND SNOWMAN

1. Glue tabs in alphabetical order to form body.
2. Glue tabs in alphabetical order to form head.
3. Fold Hat Bill forward and glue to place marked L.
4. Glue arms on by matching up letters.
5. Glue tabs O and P on body inside head to attach.

SAND SNOWLADY

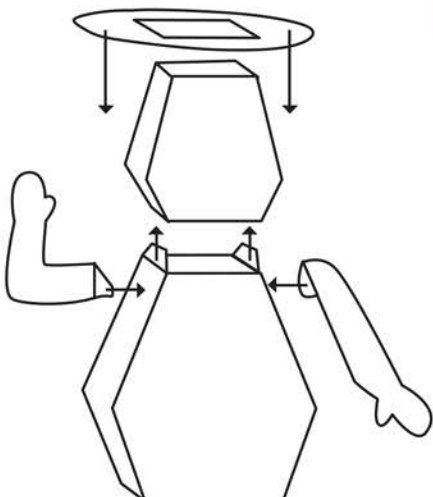
1. Glue tabs in alphabetical order to form body.
2. Glue tabs in alphabetical order to form head.
3. Glue arms on by matching up letters.
4. Glue tabs N and O on body inside head to attach.
5. Slide hat brim down over head.

Take a picture with your finished masterpiece and share it with @DisneyCruise using #DCLholidaytoys

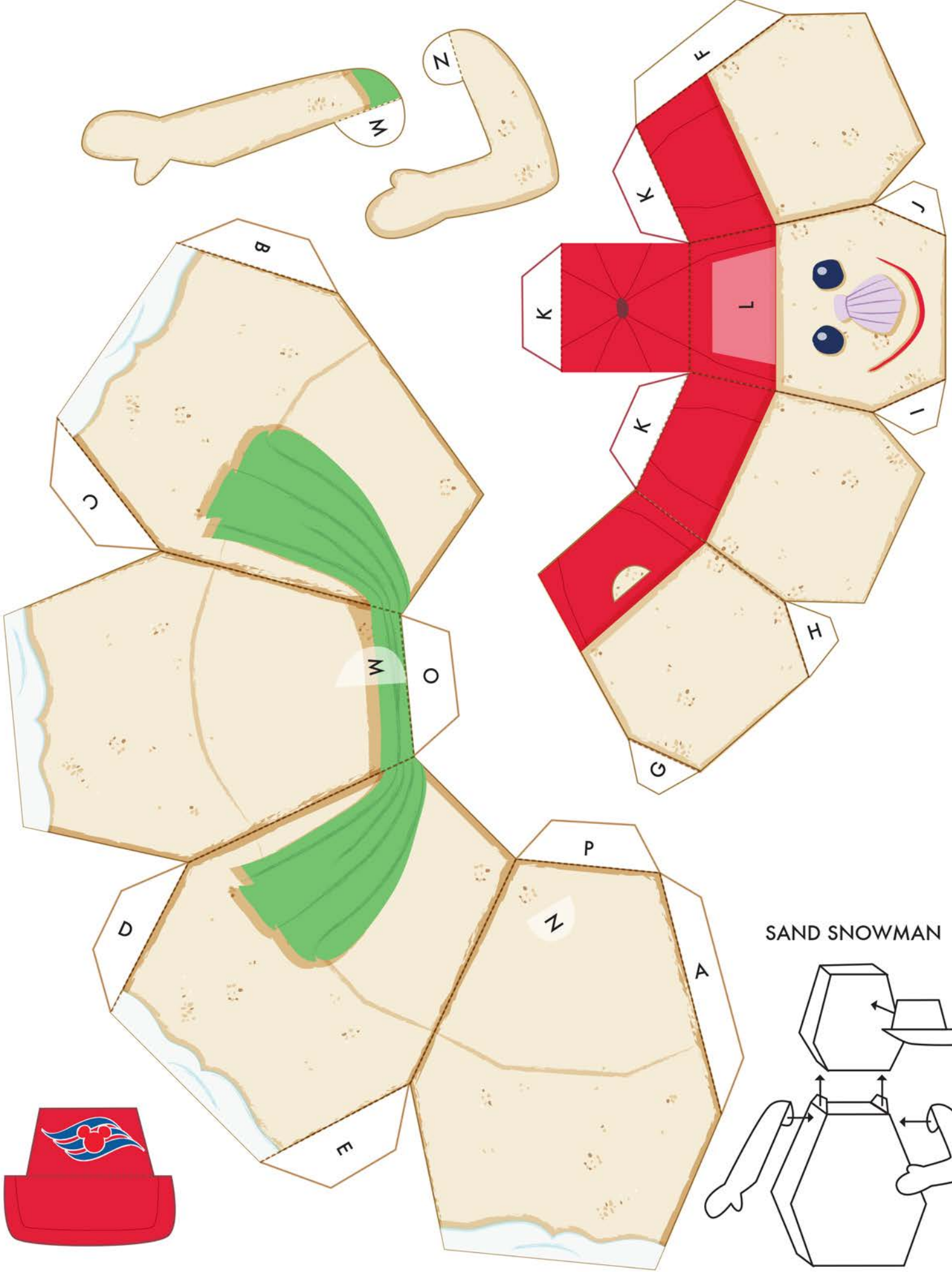




SAND SNOWLADY



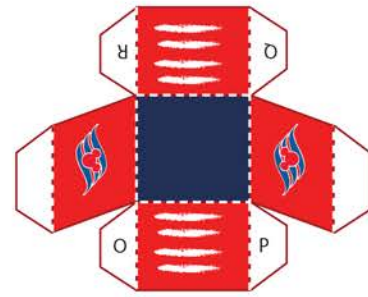
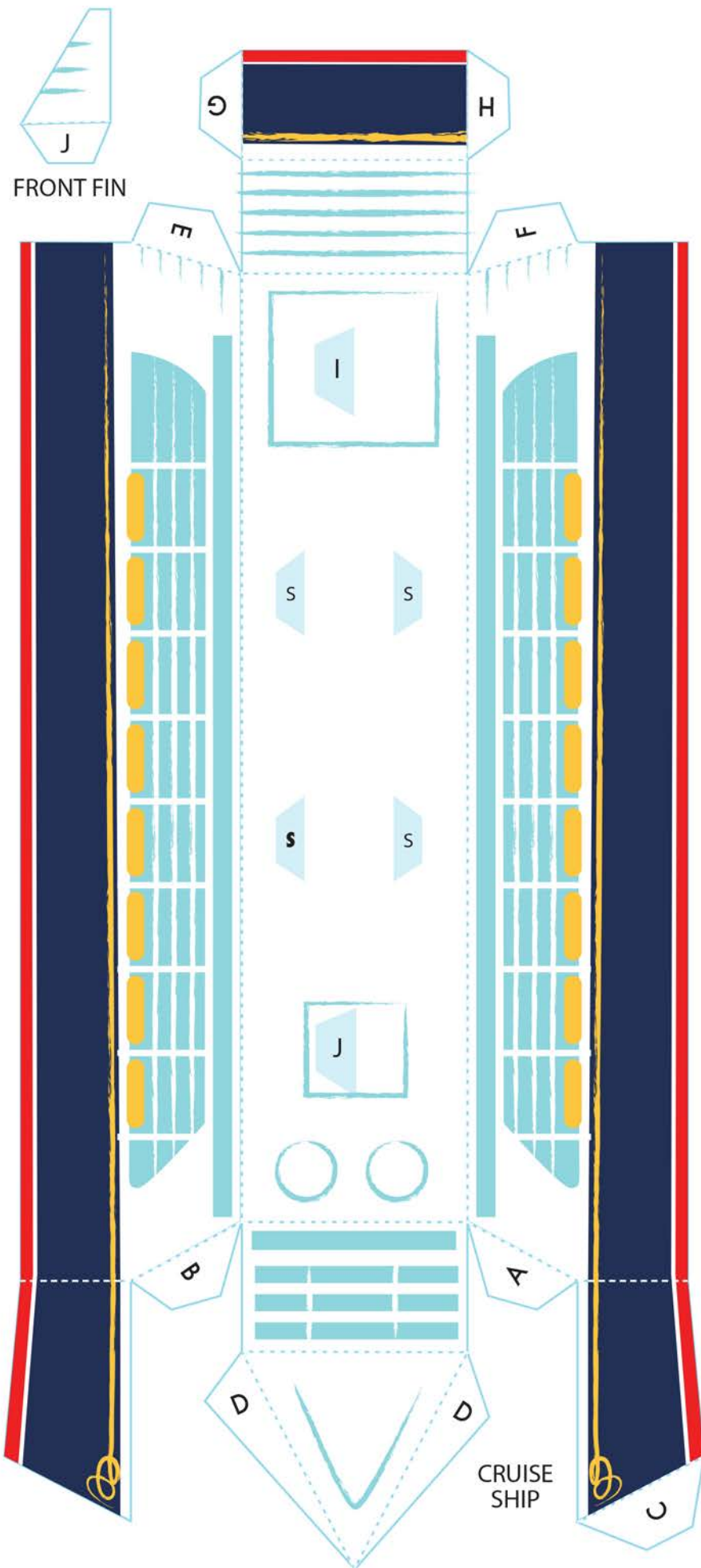
cut this part out



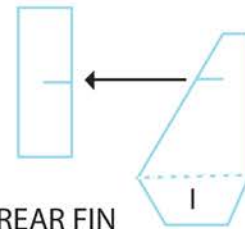
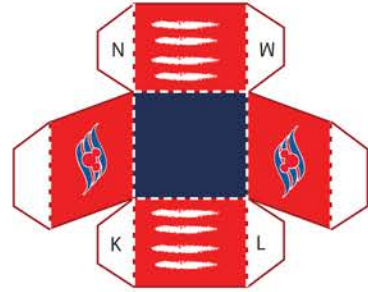
SAND SNOWMAN



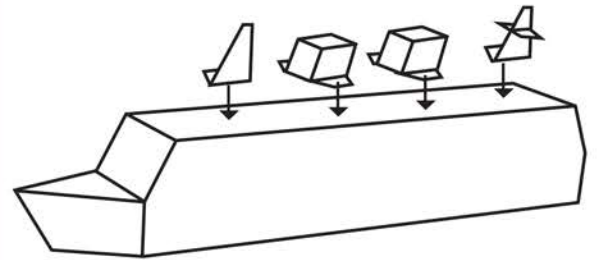
BACKDROP



STACKS



REAR FIN



ASSEMBLY INSTRUCTIONS

1. Print this template on matte photo paper or card stock.
2. Use a thin layer of white glue for gluing.
3. For nice clean folds, score dashed fold lines by very lightly running an x-acto knife along a straight edge.
4. Cut out all parts as needed on solid lines.
5. Glue tabs in alphabetical order to form cruise ship.
6. Cut slots in both parts of rear fin and slide together.
7. Attach rear fin by folding tab I down and gluing to ship where indicated.
8. Attach front fin by folding tab J down and gluing to ship where indicated.
9. Form stacks by gluing tabs in alphabetical order.
10. Glue stacks to ship where indicated with S.

Take a picture with your finished masterpiece and share it with @DisneyCruise using #DCLholidaytoys